

ALLOYS

ER308L, ER309L & ER316L STAINLESS STEEL WELDING WIRE



- Stainless steel spooled wires and cut lengths are precisely produced to conform to the requirements of AWS A5.9
- Manufactured to exacting standards with particular attention given to cleanliness, concentricity and helix of the finished product



Priced per Spool

Model No.	Mfg. No.	Dia."	Wt. lbs.	Price/Each
ER308L SPOOLED WIRE				
TTU760	308L025X2SP	0.025	2	
TTU751	308L025X10SP	0.025	10	
TTU738	308L025X25SP	0.025	25	
TTU761	308L030X2SP	0.030	2	
TTU752	308L030X10SP	0.030	10	
TTU739	308L030X25SP	0.030	25	
TTU762	308L035X2SP	0.035	2	
TTU753	308L035X10SP	0.035	10	
TTU740	308L035X25SP	0.035	25	
TTU741	308L045X25SP	0.045	25	
TTU742	308L116X25SP	1/16	25	
ER309L SPOOLED WIRE				
TTU754	309L025X10SP	0.025	10	
TTU763	309L030X2SP	0.030	2	
TTU755	309L030X10SP	0.030	10	
TTU743	309L030X25SP	0.030	25	
TTU764	309L035X2SP	0.035	2	
TTU756	309L035X10SP	0.035	10	
TTU744	309L035X25SP	0.035	25	
TTU745	309L045X25SP	0.045	25	
TTU746	309L116X25SP	1/16	25	
ER316L SPOOLED WIRE				
TTU765	316L025X2SP	0.025	2	
TTU757	316L025X10SP	0.025	10	
TTU766	316L030X2SP	0.030	2	
TTU758	316L030X10SP	0.030	10	
TTU747	316L030X25SP	0.030	25	
TTU767	316L035X2SP	0.035	2	
TTU759	316L035X10SP	0.035	10	
TTU748	316L035X25SP	0.035	25	
TTU749	316L045X25SP	0.045	25	
TTU750	316L116X25SP	1/16	25	

36" STAINLESS STEEL CUT LENGTH TIG RODS

- **308L** - For joining 304 and 304L and other 18-8 stainless steels
- **309L** - For 309 stainless steels and joining carbon steels or low alloy steels to stainless steels
- **316L** - For joining 316L stainless steels
- Priced per 10-lb. tube



Priced per Tube

Model No.	Mfg. No.	Dia."	Wt. lbs.	Price/Each
308L				
TTU768	308L030X36T	0.030	10	
TTU769	308L035X36T	0.035	10	
TTU770	308L045X36T	0.045	10	
TTU771	308L116X36T	1/16	10	
TTU772	308L332X36T	3/32	10	
TTU773	308L18X36T	1/8	10	
TTU774	308L532X36T	5/32	10	
TTU775	308L316X36T	3/16	10	
309L				
TTU776	309L035X36T	0.035	10	
TTU777	309L045X36T	0.045	10	
TTU778	309L116X36T	1/16	10	
TTU779	309L332X36T	3/32	10	
TTU780	309L18X36T	1/8	10	
TTU781	309L532X36T	5/32	10	
316L				
TTU782	316L030X36T	0.030	10	
TTU783	316L035X36T	0.035	10	
TTU784	316L045X36T	0.045	10	
TTU785	316L116X36T	1/16	10	
TTU786	316L332X36T	3/32	10	
TTU787	316L18X36T	1/8	10	
TTU788	316L532X36T	5/32	10	
TTU789	316L316X36T	3/16	10	

STAINLESS STEEL GAS SHIELD FLUX-CORED WIRE



Precisely formulated for all-position versatility with a smooth arc, good wetting and overall operator appeal. Products conform to AWS Specification A5.22.

308LT1-1

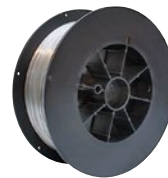
Most frequently used for base metals of similar composition such as AISI Types 301, 302, 304, 305 and 308.

309LT1-1

Used for welding similar alloys in wrought or cast form; occasionally, to weld Type 304 base metals when severe corrosion conditions exist; and, at times, welding dissimilar steels.

316LT1-1

Used for welding similar alloys (containing about 2% molybdenum); also for high temperature service applications (the presence of molybdenum provides increased creep resistance at elevated temperatures).



TTU790



TTU793



TTU796

Priced per Spool

Model No.	Mfg. No.	Dia."	Wt. lbs.	Price /Each
308LT1-1				
TTU790	308LT11035X25SP	0.035	25	
TTU791	308LT11045X25SP	0.045	25	
TTU792	308LT11116X25SP	1/16	25	
309LT1-1				
TTU793	309LT11035X25SP	0.035	25	
TTU794	309LT11045X25SP	0.045	25	
TTU795	309LT11116X25SP	1/16	25	
316LT1-1				
TTU796	316LT11035X25SP	0.035	25	
TTU797	316LT11045X25SP	0.045	25	
TTU798	316LT11116X25SP	1/16	25	

STAINLESS STEEL ELECTRODES



- Exactly manufactured to conform to the requirements of AWS5.4
- Priced per 5 or 10-lb. tube



Priced per Tube

Model No.	Mfg. No.	Dia." x Length"	Wt. lbs.	Price /Each
308L-16				
TTU799	308L16116E	1/16 x 10	5	
TTU800	308L16332E	3/32 x 12	10	
TTU801	308L1618E	1/8 x 14	10	
TTU802	308L16532E	5/32 x 14	10	
TTU803	308L16316E	3/16 x 14	10	
309L-16				
TTU804	309L16332E	3/32 x 12	10	
TTU805	309L1618E	1/8 x 14	10	
TTU806	309L16532E	5/32 x 14	10	
TTU807	309L16316E	3/16 x 14	10	
316L-16				
TTU808	316L16332E	3/32 x 12	10	
TTU809	316L1618E	1/8 x 14	10	
TTU810	316L16532E	5/32 x 14	10	
TTU811	316L16316E	3/16 x 14	10	